

AUTOMATED TIP CONDITIONING SYSTEM



Welcome to Becker Robotic, where innovation meets reliability!

With over 30 years of experience, we specialize in cutting-edge cable management systems and media supply elements for robotics. Our global presence allows us to deliver top-notch solutions for industrial automation worldwide. From product development and design to manufacturing, project support, installation, and optimization, we are here to support you every step of the way. Join us in revolutionizing the automation industry!

CT8268-S

AUTO TIP DRESSER - STANDARD

- High trimming torque (rated output torque: 46N*m) and high revolving speed (trimming period:1s).
- High-tenacity blade and high wear-resistance blade are optional.
- It can be switched to either horizontal or vertical installation (Type V, Hand T supported).
- Outsourced parts with exquisite workmanship and strict standard (SIEMENS Phoenix, SMC, THK and NSK).
- Customized swing arm type tip dresser



Technical Parameters

MODEL	CT8268-S
Drive Mode	Gear
Power Supply	3ph/AC 380-420V
Frequency	50/60 Hz
Speed	246 rpm
Rated Output Torque	46 N*m
Rated Power	1.2 KW
Solenoid Valve	DC24V 4.5W 2.0MPa
Motor Floating Range	±15mm
Net Weight	49 KG
Gross Weight	61 KG
Packing Size	115*61*66cm

CT8268-U

AUTO TIP DRESSER - UPGRADED

- High trimming torque (rated output torque: 46N*m) and high revolving speed (trimming period: 1s).
- High-tenacity blade and high wear-resistance blade are optional.
- Adjustable installation height of tip dresser main engine; it can be switched to either horizontal or vertical installation (Type V, Hand T supported).
- Outsourced parts with exquisite workmanship and strict standard (SIEMENS Phoenix, SMC, THK and NSK).
- Customized swing arm type tip dresser



Technical Parameters

MODEL	CT8268-U
Drive Mode	Gear
Power Supply	3ph/AC 380-420V
Frequency	50/60 Hz
Speed	246 rpm
Rated Output Torque	46 N*m
Rated Power	1.2 KW
Solenoid Valve	DC24V 4.5W 2.0MPa
Motor Floating Range	±15mm
Motor Height Adjustment	70-110cm
Net Weight	49 KG
Gross Weight	61 KG
Packing Size	115*61*66cm

CT8268-DC

AUTO TIP DRESSER AND CHANGER COMBO SET

- External ports support hard JO control and various bus controls (As requirement).
- Designed with functional modules, including three functional modules: dressing, cap removing and cap installing. Each functional module is relatively independent and will not affect each other, thus effectively improving the adaptability, reliability and flexibility of the equipment.
- Removing module equipped with two forward and reverse tip removing wheels, which can remove the electrode caps of the movable arm and fixed arm of the welding gun respectively, without damages of the electrode rods of the welding gun, ensuring their liability and stability of the welding system.



V-Type



T-Type

- Rich sensor system, each action command coordinated with the welding guns and robot has confirmation feedback, ensuring the reliability and stability of the automatic system without human supervision.
- It features scientific and reasonable design, and is strictly made of quality materials, and the purchased parts are from international and domestic first-line brands to ensure the quality and reliability of the machine, which provides strong support for the unmanned automatic welding system.

Technical Parameters

MODEL	CT8268-DC
Drive Mode	Gear
Power Supply	3ph/AC 380-420V
Frequency	50/60 Hz
Dressing Speed	230 rpm/460 rpm Optional
Rated Output Torque	25/50 N*m Optional
Rated Power	1.2 KW
Solenoid Valve	DC24V 4.5W 2.0MPa
Motor Floating Range	±15mm
Motor Height Adjustment	70-110cm
Magazine Capacity	10 pairs
Electrode Size	13-20mm
Control and feedback Signal	DC24V PNP/NPN
Net Weight	84 KG
Gross Weight	94 KG
Packing Size	115*61*66cm

CT8268-DC AUTO TIP CHANGER

- External ports support hard JO control and various bus controls (As requirement).
- Designed with functional modules, including cap removing and cap installing. Each functional module is relatively independent and will not affect each other, thus effectively improving the adaptability, reliability and flexibility of the equipment.
- Removing module equipped with two forward and reverse tip removing wheels, which can remove the electrode caps of the movable arm and fixed arm of the welding gun respectively, without damages of the electrode rods of the welding gun, ensuring the reliability and stability of the welding system.
- Rich sensor system, each action command coordinated with the welding guns and robot has confirmation feedback, ensuring the reliability and stability of the automatic system without human supervision.
- It features scientific and reasonable design, and is strictly made of quality materials, and the purchased parts are from international and domestic first-line brands to ensure the quality and reliability of the machine, which provides strong support for the unmanned automatic welding system.
- Waterproof designed, perfectly running in harsh working conditions.



Technical Parameters

MODEL	CT8268-C
Input Air Source	0.4-0.6MPa
Height Adjustment	70-110cm
Magazine Capacity	10 pairs
Electrode Size	13-20mm
Control and feedback Signal	DC24V PNP/NPN
Net Weight	60 KG
Gross Weight	65 KG
Packing Size	115*61*66cm

CT8268-STPISTDM SWING ARM TIP DRESSER

- It is suitable for dressing the fixed robotic spot welding guns.
- Cylinder drive or motor drive is optional.
- Secondary floating mechanism is optional.
- Rich sensor system, each action command coordinated with the welding guns and robot has confirmation feedback, ensuring the reliability and stability of the automatic system without human supervision.
- The swing arm flip angle and dressing position are adjustable.



Motor Swing Arm Tip
dresser-CT8268-STDm



Technical Parameters

MODEL	CT8268-STP
Drive Mode	Gear
Swing Drive	Pneumatic / Motor
Power Supply	3ph / AC 380–420V
Frequency	50 / 60 Hz
Air Source	0.4–0.6 MPa oil-free compressed air
Control and Feedback Signal	DC 24V PNP/NPN Optional
Dressing Speed	230 / 460 rpm
Rated Output Torque	25 / 50 N·m
Rated Power	1.2 KW
Net Weight	160 KG
Gross Weight	170 KG
Packing Size	145 × 111 × 70 cm

DA TD8268-MTDB

MOBILE AUTO TIP DRESSER-BATTERY

- Dressing upper/lower electrode cap simultaneously, to align the electrode cap after dressing and improving the dressing efficiency.
- Fitted with floating shock absorption device by default, to reduce the impacts from tip dresser and welding gun during dressing process and get adapted to the dressing position.
- High torque (rated output torque: 39.2N*m) and high revolving speed (Dressing time 1s), applies to suspension type welding gun and electrode dressing of spot welder or stationary spot welder.
- With adjustable installation height, the main engine of tip dresser can be flexibly switched to horizontal, vertical state.
- Outsourced parts with exquisite workmanship and strict standard (SIEMENS Phoenix, SMC, THK and NOK).



Technical Parameters

MODEL	DATD8268-MTDB
Drive Mode	Gear
Power Supply	3ph/AC 380-420V
Frequency	50/60 Hz
Dressing Speed	230/460 rpm
Rated Output Torque	25/50 N*m
Rated Power	780W
Adjustable Height	850+/-150MM
Net Weight	85 KG
Gross Weight	105 KG
Packing Size	1

CT8268-CCT NOZZLE CLEANER

- Three functions: wire cutting, welding gun cleaning, and oil spraying
- 1.6mm carbon steel welding wire can be cut off easily at the air pressure of 0.3MPa thanks to the intensified design of wire cutting structure: insensitive to air pressure fluctuation
- The cutting wire blade can be mounted at either front or reverse side; so, the other side can be used normally when one side is worn, in order to prolong the blade service life and reduce use costs
- The oil sprayer, which is right below the welding gun during operation, can spray mist anti-splash oil evenly into the welding gun. The oil film can reach the bottom of electric nozzle
- The oil sprayer is sealed to avoid polluting the environment. It is fitted with oil return device by default, in order to recycle the residual anti-splash oil and reduce use costs
- The reamer has undergone high-quality alloy steel nitriding treatment, to ensure good tenacity while keeping surface hardness above HRC56, and keep it sturdy and durable.



Technical Parameters

MODEL	DATD8268-CCT
Gas Source	0.4–0.8 MPa dry and compressed air
Air Consumption	Approx. 10 L/s
Control Signal Voltage	U = 24V DC I(max) = 0.15A
Gun Cleaning Process	Approx. 4–5 s
Noise Grade	≤ 70 dB
Volume of anti-splash agent	500 ml
Cutting Wire Diameter	Carbon steel welding wire Max 1.6 mm
Spraying Volume of Oil	0–5 ml/s (adjustable)
Net Weight	24 kg
Gross Weight	26 kg
Packing Size	85 × 30 × 35 cm

CT8268-CCT NOZZLE CLEANER



d2	d1	D1	D2
Contact Tip Min Diameter(mm)	Contact Tip Max Diameter(mm)	Reamer Outer Diameter(mm)	Reamer Inner Diameter(mm)
13	6	12	7
13.5	8	12.5	9
14	8	13	9
15	8	14	9
15	9	14	10
16	8	15	9
16	10	15	11
17	10	16	11
18	10	17	11
18	12	17	13
19	10	18	11
20	10	19	11



Reamer Options

Please choose proper reamer dimensions based on the contact tip and nozzle used:

- The reamer inner diameter should be 1 mm larger than the contact tip outer diameter;
- The reamer outer diameter should be 1 mm smaller than the nozzle inner diameter;
- For reamer with other special size, please contact the manufacturer for customization.

CT8268-DVI TIP INSPECTOR SYSTEM

- Spot welding electrode cap quality control after dressing, measurement of electrode cap end face dimensions and position, inspection of defects on the end face of the electrode cap
- Dust and dirt resistant design with its own air blades and covers, Non-contact AI optical inspection design AI model training software for continuous optimization of accuracy
- Inspecting including Black marks, bumps, sticky copper chips, pits, radial lines, end face too big, end face too small, end face out of round, end face eccentricity, plum blossom pattern, incomplete dressing, uneven dressing
- Waterproof designed, perfectly running in harsh working conditions



Technical Parameters

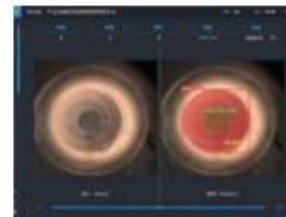


MODEL	DATD8268-DVI
Inspecting Speed	<1s
Inspecting Accuracy	0.01mm
Range of Inspecting Diameter	12-20mm
Protection Class	IP67

Inspection Cases



Implemented Projects



AI Model
Training Platform



AI Cap Defect
Inspection System

CT8268-PTS PNEUMATIC TIP DRESSER

- Pneumatic single-sided tip dresser is a machine for manually dressing the electrode of spot-welding machine.
- Drive by pneumatic tool to dressing the surface of the electrode with compressed air as power source.



- Pneumatic tip dresser can work on the line, and is easy to operate, safe and convenient.
- It can grind the single-sided electrode. The electrode surface is smooth and shiny, and the end face is flat after dressing, which keep the fine welding quality.

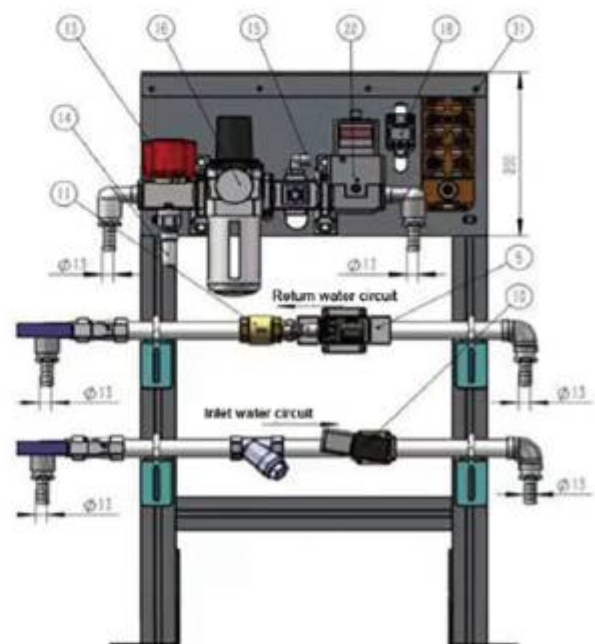
Technical Parameters

MODEL	CT8268-PTS
Power	Compressed air
Diameter of Electrode Cap	8-18mm
Weight	1.5kg
Packing	Carton Box

Related Products CLAVEL DA TD SPARE SPARTS



Single/ Multiple Blades Cutter



Water Vapor Unit



Becker Robotic – Global Reach, Local Expertise

With a commitment to innovation and customer satisfaction, Becker continues to expand its global footprint while maintaining a personalized approach to client engagement. Our team is dedicated to delivering solutions that not only meet but exceed industry standards, driving success for our partners worldwide.

For more information on our products and services, please visit: becker-robotic.com

Locations

● GERMANY (HQ)

Heinrich-Leggewie-Straße 10
48249 Dülmen, Germany

Tel. +49 (0) 2594 9464 - 0
info@becker-robotic.de
vertrieb@becker-robotic.de

● USA

Atlanta: 6410 Atlantic Blvd. STE
350 Norcross, GA 30071, USA

+1 (770) 837-0449
info@becker-robotic.com
sales-atl@becker-robotic.com

Michigan: 260 Engelwood
Suite E Orion, MI 48359, USA

+1 (248) 977-1384
info@becker-robotic.com
sales-mi@becker-robotic.com

● MEXICO

Primer Retorno Universidades
No. 1 Int. 41-A La Pradera,
Querétaro, QRO. México, 76269

+52 (442) 748 0114
info-mx@becker-robotic.com
sales-mx@becker-robotic.com

● CHINA

East of Jiande Rd, Zhangpu
Township, 215321 Kunshan
City, Jiangsu Province

+86 138 4007 6439
info@becker-robotic.com
sales-cn@becker-robotic.com

● JAPAN

7F Shin Aoyama Building East,
1-1-1 Minami Aoyama, Minato-Ku,
Tokyo 107-0062, Japan

+81 7041 407820
g.kobayashi@becker-robotic.com

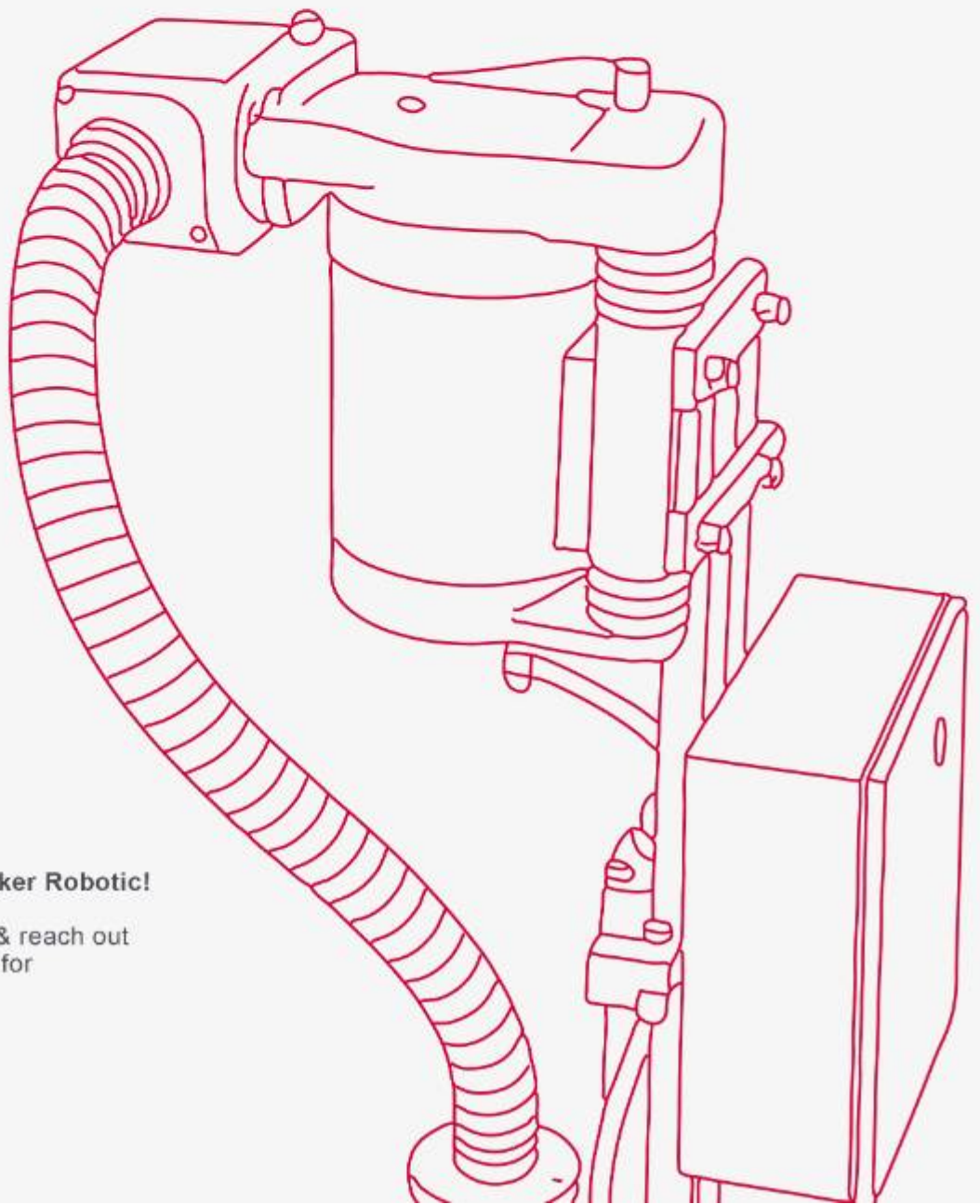
● INDIA

Pune: Kasturba Industrial
premises plot A-21/2, Khalumbre,
Chakan MIDC, Phase-2, Behind
Rane Axle, Near Courtyard
Marriot Pincode: 410501 |
Tal: Khed, Dist. Pune, Maharashtra

+91 2135 682455
info@becker-robotic.in
sales@becker-robotic.in

Delhi: B-5, Cyberwalk The
Greener Pasture, Plot No: CP--9
Sector 8, IMT Manesar, Gurugram,
Haryana 122050 India

+91 2135 682455
info@becker-robotic.in
sales@becker-robotic.in



Stay Connected with Becker Robotic!

Follow us on social media & reach out to any of our global offices for more information.